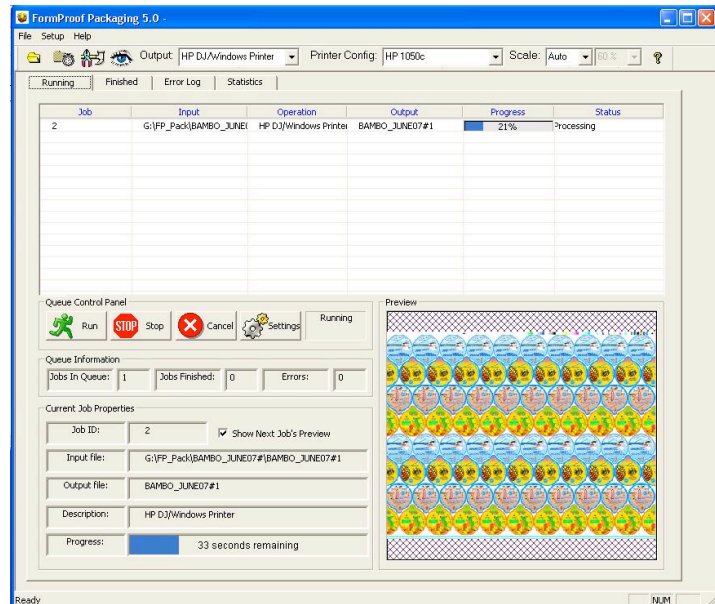


Software Information

HelioFormproof V 5.0



New features

- User Interface**

The user interface has been completely re-designed and it is much more informative than in the previous version. It includes:

 - preview of the job being processed
 - list of jobs in the queue, as well as the list of running jobs, finished jobs, error log and finished jobs statistics are available now
 - new Hot Folders mechanism which allows definition of multiple folders for automatic jobs processing.
- Processing Job Ticket**

It is now possible to process jobs using Job Ticket files in both manual and automatic modes.
- Printing**

Printing has greatly improved. All various printing options (HP DesignJet, Epson and printing to Windows printer) are now concentrated in a single plugin. Among the new features are:

 - Improved Test cut handling, including mirrored jobs.
 - Support for color management. New color management files (LUT and ICC) for HP DesignJet 4000 and 5000 are also included now in the installation package.
 - Allow image rotation in order to save paper when printing ("AllowRotation" flag).
 - Title information has been expanded.

Software Information

- The "Windows printing" mode supports enhanced proofing on any installed Windows printer.

- **PDF Output**

Creating of PDF output file is now supported, for improved archiving and client communication.

- **Complex job processing**

It is now possible to proof complex jobs which contain a mix of-compressed and uncompressed separations.

Supported Printers

- **Direct printing**

HelioFormproof offers "direct printing" capabilities for several printers from HP and Epson, which enable faster printing, better quality and advanced features. Thus HelioFormproof works best with HP DesignJet printers (HP-650C/750C, 2xxxCP, 3xxxCP, 1050/1055, 4000, 5000) and Epson printers (7000/9000).

- **Windows printing**

HelioFormproof provides basic printing support for any printer for which a Windows driver is installed.

Hardware

- **Intel PC**

Pentium Dual-Core CPU 1.8 GHz or faster,
1 GB RAM, 150 GB Hard Disk, SATA, 7200/10000 rpm,
1 GBit Ethernet card, 17" TFT monitor

Operating system

- Windows 2000 Service Pack 4
- Windows XP Service Pack 2

Other software

HelioCom V. 8.5; HelioDisk V. 4.0
K500 Version V. 2.00; K500Control2 V 2.00;
K405 Version V. 3.21;
Compact V. 2.00; TUK V. 2.00