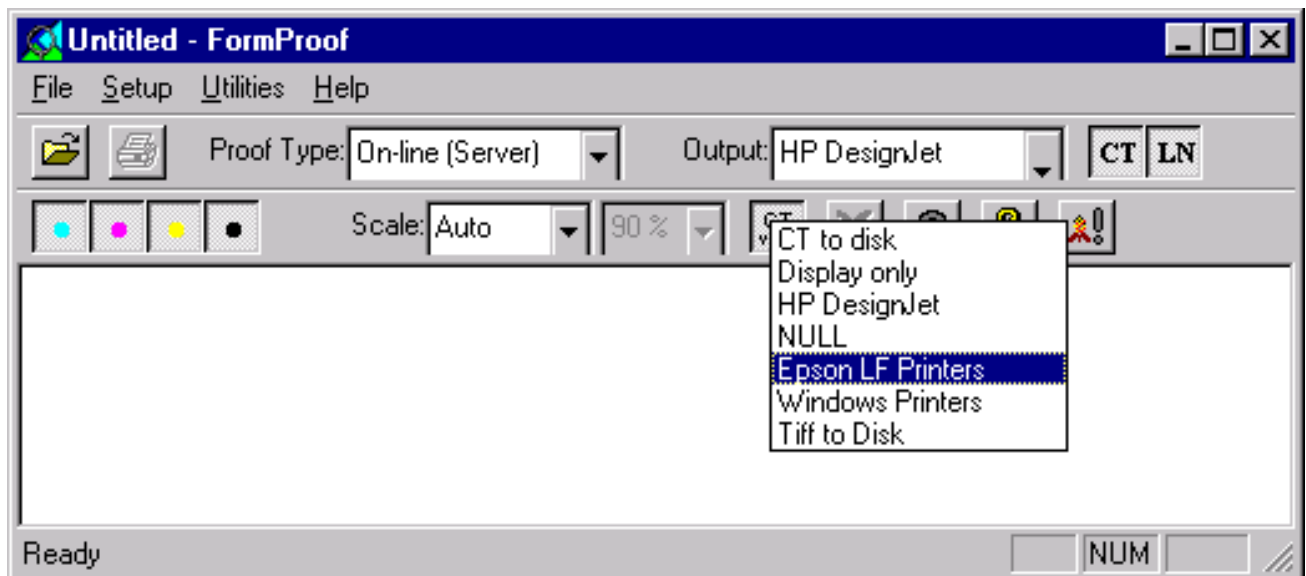


## FormProof 4.2

**New functions :**

- Windows NT4 (SP5) and **Windows 2000** (SP1) tested version
- 
- Optimized support for **HPDesignJet5000 / Epson9000** printers
- 
- Standard output for **all Windows Printer Drivers** (Non optimized)
- 
- Proof of JPEG files and Proof from CD
- 
- New LUT-editor - including X-RITE DTP32 densitometer interface
- 
- Support for Remote FormProof option (separate module)
- 
- Support for seamless proofing (Packaging FormProof)
- 
- Proof of test cut - area (Packaging FormProof)
- 



**Features :**

- Integrates all service packs since version 4.1.
- Updated installation procedure and documentation.

**Hardware**

- For HP DesignJet 5000 minimum 128 MB RAM and 450 Mhz Pentium III

**Software**

- **No system compatible requirements !**

- FormProof Packaging : 04989511    Update license: TOE 0256
- FormProof Publication : 05111994    Update license: 05453496