

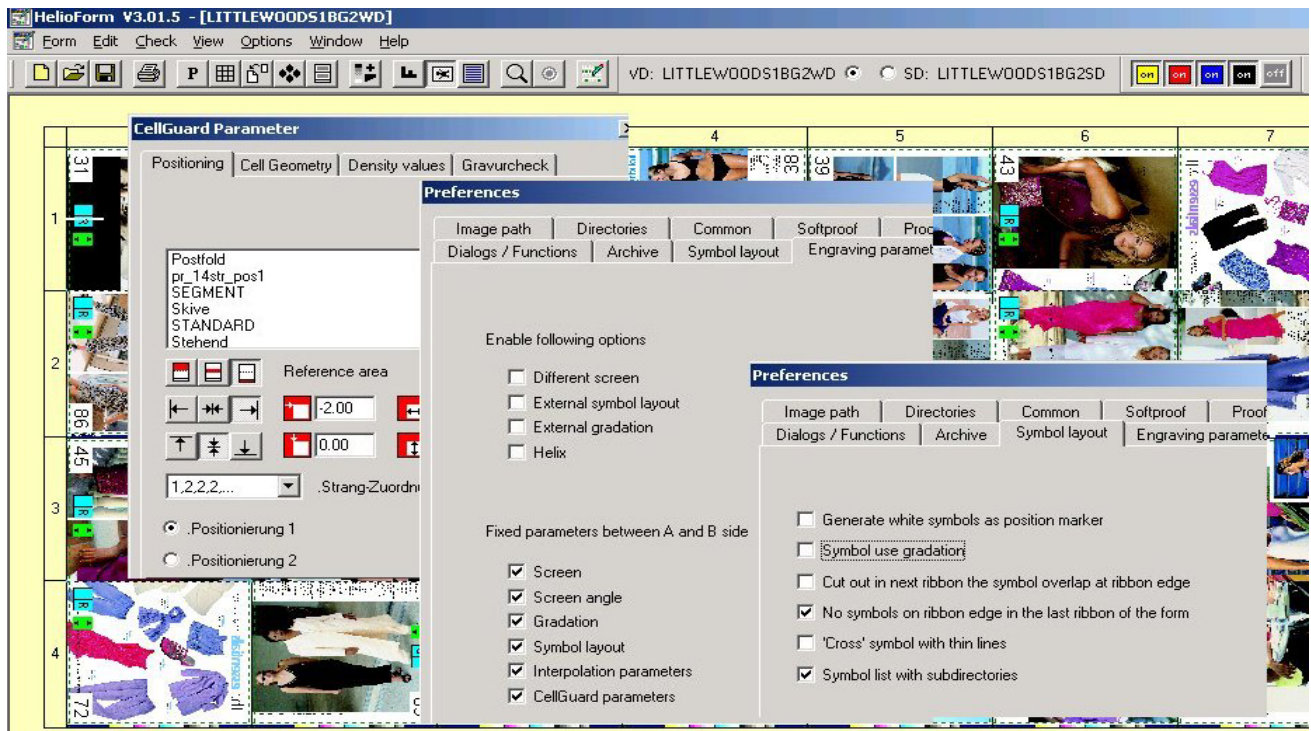
# Helio Form 3.2

## Software Information



### New features :

- Windows NT4 (SP6) and **Windows 2000** (SP3) tested version
- Simultaneous partner form generation
- Second Test-cut window position e.g. for portrait production
- GravureCheck : Test-cut at the end of engraving e.g. for stylus breakage control
- New option : Screen-Editor - definition of free angles for K406 / K6
- Final Page support : Imposition of colour separated Final Pages (Option)
- Improved 'Ribbon cut-off' handling and improved display of 'Shingling' values
- New control feature : 'List view' of all form parameters
- Improved administration : Symbols can be sorted within subdirectories
- Improved SoftProof for Symbols : Single colour display e.g. for overlapped symbols
- Viewfile print of single segments on any Windows Printer
- Engraving head distance information for correct FormProof with variable ribbon width
- Several minor corrections and changes



### Note :

This HelioForm version requires a new **KeyCode !**

### Compatibilities :

HelioControl V3.02 , GipsyClassic all versions , GipsyNT V1.60 , FormProof 4.3

### Order No.

HelioForm 3.0 Update: TOE : 0477

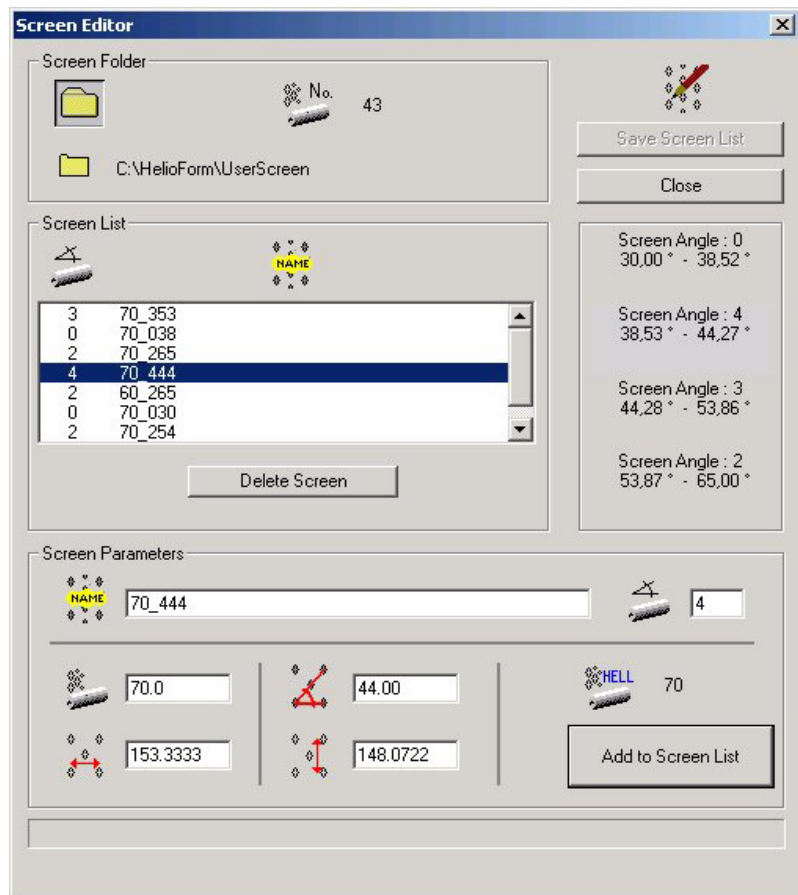
# Helio Form 3.2

## Software Information



### Screen Editor option

With the new HelioForm Screen Editor it is possible to define customized screens with free selectable screen angles between 30° and 65°.



### Compatibilities :

Hardware : **K406 / K6** with **GipsyNT** only!  
Software : HelioControl V 3.1 and GipsyNT V1.63

Customized training is strongly recommended to ensure the proper use and integration of new functions.

### Order No.

User Screen definition Publication TOE :