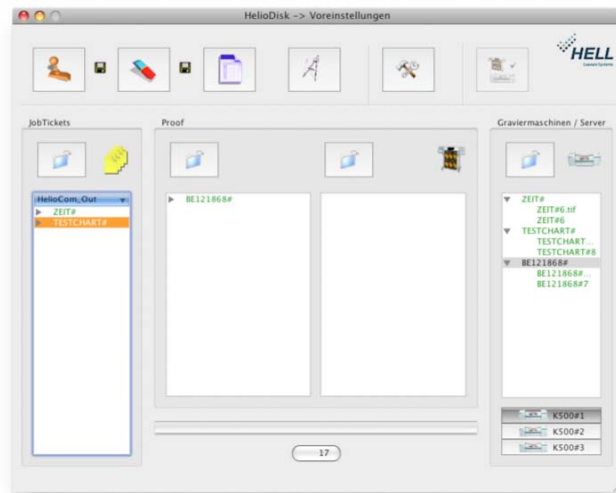




HelioDisk V 5.0

October 2008



New functions

- **JDF import**
Job data from MIS systems can be taken over in the form of a text file and now also via the JDF interface.
- **Fully automatic import of a .pro file**
The fully automatic generation of job tickets is now also possible in the Mac version.
- **Operation**
 - The "Colors" dialog box has been completely revised.
 - Job tickets are now selected using the job ticket folder.
- **Cellaxy**
Various adjustments to the Cellaxy control system.
- **Twain**
Adjustments for Twain engraving on the K500:
 - Display of shorter engraving time in Twain mode
 - Test cut and stylus fracture detection for 2nd engraving channel
- **HelioSprint III**
The engraving time is now also calculated for HelioSprint III engraving systems.



- **New “proof and engraving data approval” function**
A new function makes it possible to copy jobs directly from HelioDisk in the network.
- **Engraving data display**
TIFF engraving data is now displayed in advance as it will be depicted on the cylinder or in print. The TIFF data’s orientation and any mirroring during engraving are taken into account.
- **External TIFF viewer**
An external program for inspecting TIFF engraving data can now be launched direct from HelioDisk. HELL provides the PViewer program for HelioDisk on PC.
- **Printing function**
The printing function has been greatly improved:
 - The printout is now configurable
 - The column display has been improved
 - Additional job parameters are displayed

Dongle

HelioDisk 5 requires a dongle upgrade for which there is a charge. A license file is used for this purpose.

Software compatibility

Mac OSX 10.4 / 10.5
HelioCom V 8.6
K500 Classic V 2.2; K500 NT V 3.00; K500 G3 V 1.0
K50 V 1.0; K5 V 1.0
K405 Version V. 3.21; Compact V 2.00; TUK V 2.00