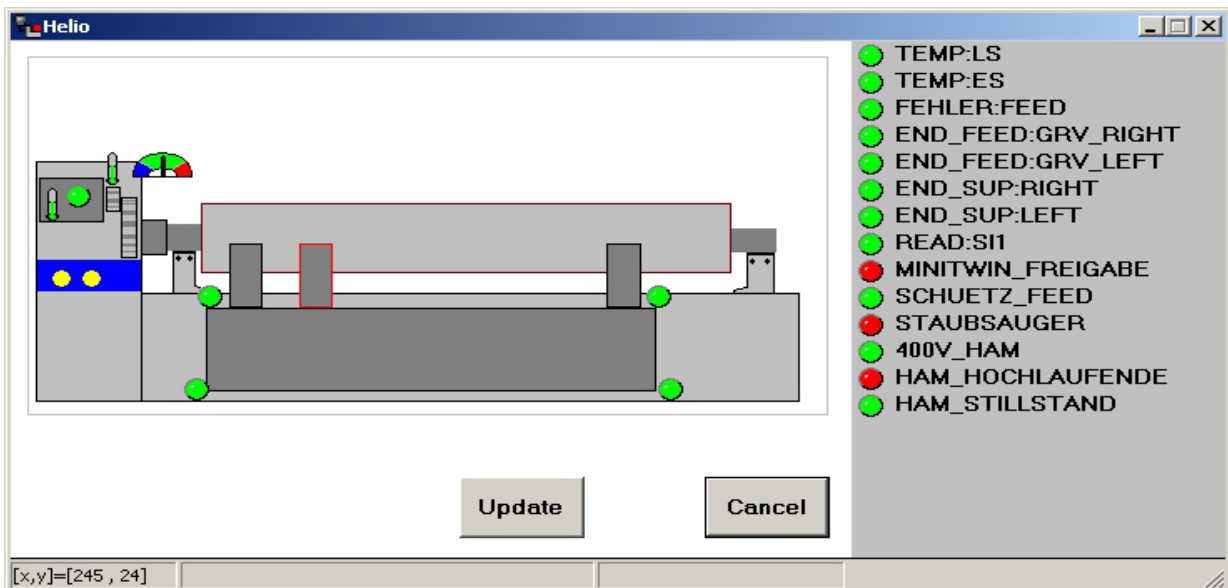


Software Information

New features :

- Windows NT (SP6) and Windows 2000 (SP4) tested version
- Cellguard version 5.05 with improved auto-focus
- Testcut via mid-tone length for the **manual CellGuard** mode
- **GravureCheck** - automatic quality control (K406 with CellGuard and GipsyNT only)
- Enhanced options for engraving channel assignment
- Improved ribbon balance due to toggle signal information for all unused HelioSprint engraving systems
- Support of the new 'Free Screen Angles' option
- Significantly improved remote diagnostic possibilities through enhanced LOG protocol data and new Helio state overview display :



Details :

It turns out, that especially often unused engraving channels are dragging quite slowly back into production conditions. Thanks to the newly invented toggle signal, all HelioSprint engraving systems are maintained for production.

The new enhanced LOG protocol data together with the new automatic LOG archive function, will offer improved remote diagnostic possibilities for the HGS-Service department.

Compatibility

HelioForm 3.2 und GipsyNT 1.63