



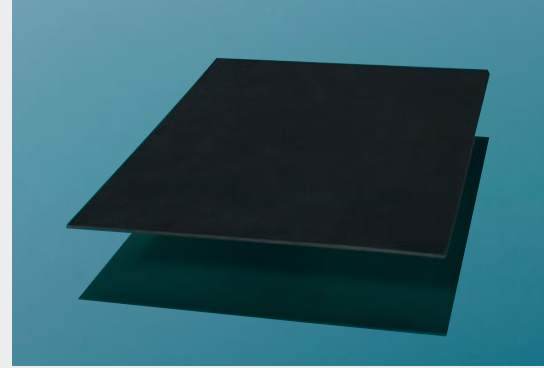
KARELDIRECT PRODUCT LINE

KARELDIRECT is our comprehensive line of elastomer plates for direct laser engraving. These innovative products have been optimized for a variety of applications such as flexible packaging, coating and varnishing, dry offset, corrugated and security. They offer excellent ink release characteristics and an extremely long print life.

More information: www.kaspar-gs.com

KARELDIRECT COATING

KAREL DIRECT COATING is an elastomer printing plate used for Varnish/Coating applications. A versatile product that works as well with high end-quality packaging, as it does with spot coatings and pressure sensitive adhesives. Suitable for water-based, solvent-based and UV coatings.



PRODUCT FEATURES

- Roll material or formats
- Overall dimensional stability
- Long lifetime
- High-resolution engraving
- Consistent print
- Improved ink laydown
- Less plate swelling

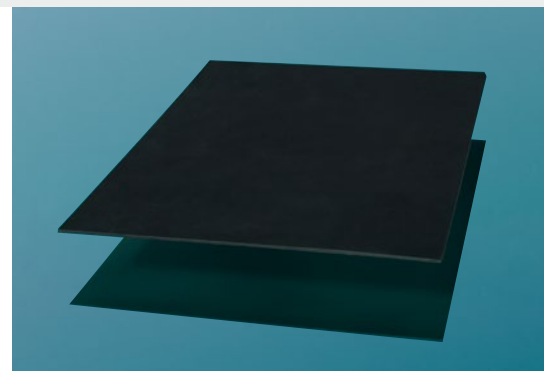
TECHNICAL DATA

Printing surface (Solvent-free)	EPDM
Color	Black
Surface	Fineground
Carrier	Mylar
Nominal thickness 65 Shore A	1.15 mm, 1.35 mm



KARELDIRECT FLEXO

KAREL DIRECT FLEXO is an elastomer printing plate used in flexo printing. Typical applications include printing flexible packaging, labels and tissue. Suitable for water-, solvent- and UV/EB-based ink systems.



PRODUCT FEATURES

- Less plate swelling
- Reproducibility
- High resolution engraving
- Long lifetime
- Available on roll
- Improved ink laydown
- Overall dimensional stability

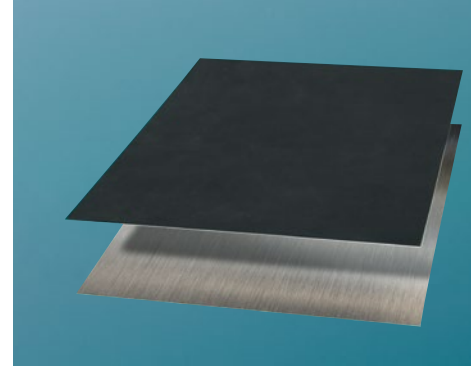
TECHNICAL DATA

Printing surface (Solvent-free)	EPDM
Color	Black
Surface	Fineground
Carrier	Mylar
Nominal thickness 65 Shore A	1.14 mm, 1.70 mm, 2.54 mm, 2.84 mm



KARELDIRECT DRY

KAREL DIRECT DRY is developed for dry offset applications, e.g. metal deco, tube- and cup-printing. Available in different shore hardnesses. Suitable for solvent- and UV-based ink systems.



PRODUCT FEATURES

- Overall dimensional stability
- High resolution engraving
- Consistent print
- Less plate swelling
- Longer plate life
- Improved ink laydown

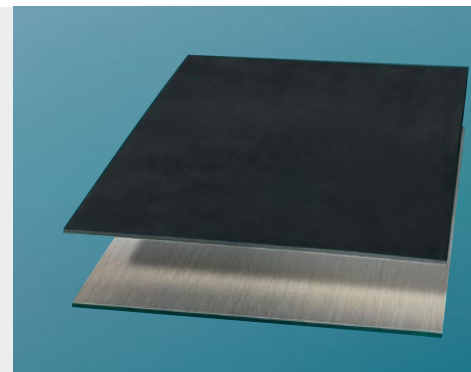
TECHNICAL DATA

Printing surface (Solvent-free)	EPDM
Color	Black
Surface	Fineground
Carrier	Metal (magnetic / thickness 0.254 mm)
Nominal thickness 65 Shore A	0.73 mm, 0.83 mm, 0.95 mm, 1.14 mm, 1.70 mm
Nominal thickness 80 Shore A	0.73 mm, 0.83 mm, 0.95 mm, 1.70 mm



KARELDIRECT SECURITY

KAREL DIRECT SECURITY is designed for high definition security printing applications to fit the high demands of the various applications in this segment. The printing form is structured with a laser (DLE) without the need of light exposure or solvents. This process allows for unseen precision within the printing elements. Even smallest details can be imaged with very high detail.



PRODUCT FEATURES

- High-resolution engraving
- 3D structures and sub surface elements are possible
- Overall dimensional stability
- Consistent print
- No swelling
- Long lifetime / less abrasion
- Improved ink laydown

TECHNICAL DATA

Printing surface (Solvent-free)	NBR
Color	Black
Surface	Fineground
Carrier	Metal (magnetic / thickness 0.254 mm)
Nominal thickness 63 Shore A	0.73 mm, 2.29 mm

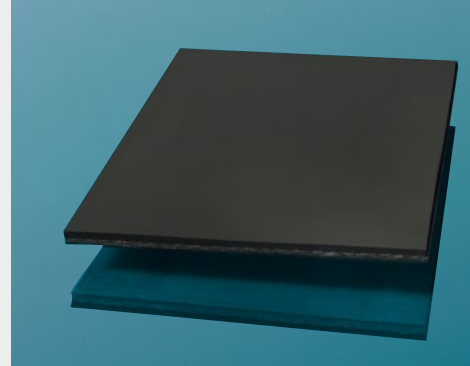


KARELDIRECT CORRUGATED

KAREL DIRECT CORRUGATED is designed for corrugated printing. A black nitrile rubber with a fabric carcass. The primary application is for the corrugated printing industry where extra abrasion resistance is required.

PRODUCT FEATURES

- Abrasion resistant for corrugated printing
- No swelling
- Long plate life
- Stripable layer
- Improved ink laydown



TECHNICAL DATA

Printing surface (Solvent-free)	NBR
Color	Black
Surface	Fineground
Carrier	Elastomer
Nominal thickness 35 Shore A	6.350 mm

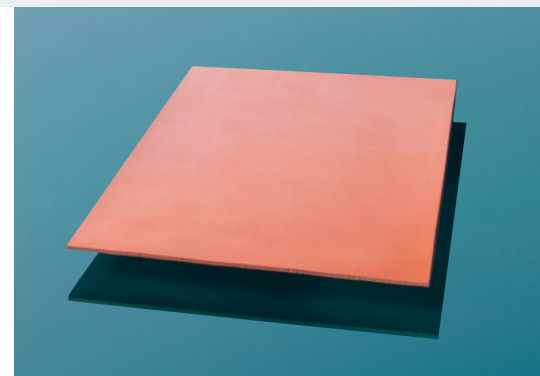


KARELDIRECT FLEXO NATURAL

KAREL DIRECT FLEXO NATURAL is a laser engravable polymer with a polyester back for dimensional stability. Designed for water base ink printing.

PRODUCT FEATURES

- Improved ink laydown
- High resolution engraving with CO₂ lasers
- Overall dimensional stability
- Roll format
- Consistent print



TECHNICAL DATA

Printing surface (Solvent-free)	Natural
Color	Red
Surface	Fineground
Carrier	Mylar
Nominal thickness 62 Shore A	1.70 mm

